



UNC
INFORMATION
TECHNOLOGY SERVICES



Joomla!
Application Overview
and
Joomla 1.5 RC 1 Highlights

Danielle Baldwin, ITS Web Services CMS Administrator


UNC
INFORMATION
TECHNOLOGY SERVICES



Presentation Contents

- What is Joomla?
- Why Joomla?
- Joomla 1.5
- New Release Highlights
- Resources


UNC
INFORMATION
TECHNOLOGY SERVICES



What is Joomla?

- Phonetic spelling for the Swahili word "Jumla", which means "all together" or "as a whole"
- Open source application
- CMS (Content Management System)
- Completely database driven via PHP and MySQL
- Extremely extensible via the use of components, modules, etc.
- Browser based application (compatible with either Internet Explorer or Firefox)

UNC
INFORMATION
TECHNOLOGY SERVICES



Why Joomla?

- Easy install (even for non programmers)
- Ever growing community of users, third-party developers and companies dedicated to Joomla
- Easy editing of content, updating images and multimedia, and managing critical data through a WYSIWYG editor
- Ability to set up multiple editors (users) with different levels of user access
- Ability to customize design through the use of multiple templates, and back end tools.

UNC INFORMATION TECHNOLOGY SERVICES

Joomla 1.5: "Mapya"

- Codenamed "Mapya" which is Swahili for "new"
- Joomla 1.5 RC 1 version was released on Saturday, July 21st, 2007
- Tentative RC 2 date of early August.
- The stable release should follow soon thereafter (rumored to be released in September)

UNC INFORMATION TECHNOLOGY SERVICES

Joomla 1.5 Goals

- Improved usability, manageability, and scalability
- Expand accessibility
- Extend the integration of external applications
- Enhance the content delivery, template and presentation capabilities
- Achieve a more sustainable and flexible framework
- Backwards compatibility with previous releases of components, templates, modules and other extensions

UNC INFORMATION TECHNOLOGY SERVICES

Joomla 1.5 Features

Easier installation process

- "On the fly" creation of the configuration.php file within the installation
- Quicker installation process using Ajax
- Additional configuration features available within the admin interface **after** the installation is complete (user and article manger, global configuration)

UNC INFORMATION TECHNOLOGY SERVICES

Joomla 1.5 Global Configuration

The screenshot displays the Joomla! 1.5 Global Configuration page. It features a navigation menu at the top with options like Site, Menu, Content, Components, Extensions, Tools, and Help. The main content area is divided into several sections:

- Site Settings:** Includes fields for Site Name (Joomla 1.5), Site Logo, and Help Server (Joomla! 1.5).
- Debug Settings:** Contains toggle switches for Enable Debugging, Debug Database, and Debug Language.
- Statistics Settings:** Includes toggle switches for Statistics, Log Content Site by Date, and Log Search Strings.
- SEO Settings:** Features a toggle for Search Engine Friendly URLs.
- Feed Settings:** Includes a toggle for Show the RSS content and a field for For each article, show.



Joomla 1.5 Features

Updated and improved admin interface

- Improved menu and overall aesthetics
- Updated graphical elements
- More collapsible menus vs. numerous menus and sub-menus spread across the page
- More intuitive design

Joomla 1.5 Menus

1.0x

1.5

1.0x

1.5



Joomla 1.5 Features

Improvements in Media Manager

- File types are more clearly represented,
- tree view to select folders
- Improved user interface, thumbnail and detail views
- Easily upload multiple files at once
- Added configuration settings 4

Joomla 1.5 Features

Improvements in Media Manager

- File types are more clearly represented,
- tree view to select folders
- Improved user interface, thumbnail and detail views
- Easily upload multiple files at once, bulk delete of items
- Added configuration settings:
configuration for media manager **now located in Global Configuration** area of admin panel



Joomla 1.5 Features

Added and improved SEF functionality

- Included in the 1.5/RC1 core versus being an installed component
- Activate SEF in Global Configuration (make sure .htaccess is ok)
- Go to Plugin Manager => **System Request Plugin**, and set "Build with real names" to YES.

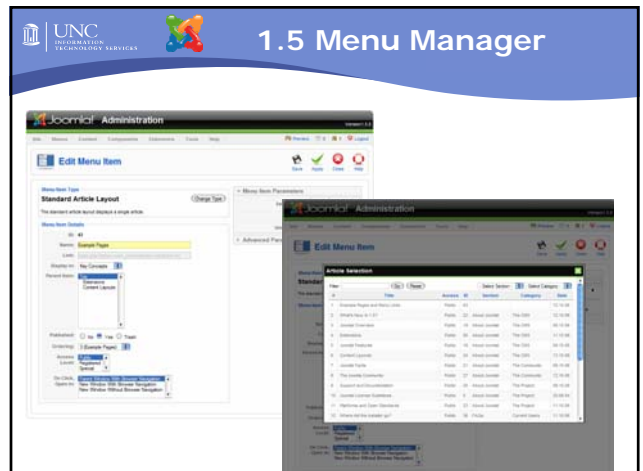




Joomla 1.5 Features

Menu Manager

- Three click process to add a new menu item
- Easy edit menu item without removing it first
- Link to just about anything (images, docs, etc.)
- Simpler interface



UNC INFORMATION TECHNOLOGY SERVICES

Joomla 1.5 Features

Media Manager

- File types are more clearly represented, tree view to select folders
- Improved user interface, thumbnail and detail views
- Easily upload multiple files at once, bulk delete of items
- Added configuration settings: configuration for media manager **now located in Global Configuration** area of admin panel

UNC INFORMATION TECHNOLOGY SERVICES

1.5 Menu Manager

UNC INFORMATION TECHNOLOGY SERVICES

Additional Changes

Article Manager

- Content items are not called "articles"
- On the fly insertion of images and article preview
- Archive ability moved back into article manager
- Improved page break functionality

Extension Manager

- Uploader for components, extensions, modules and bots are now in one unified installer (you choose the TYPE of item you are installing from a tabbed menu)
- Ability to disable components quickly

UNC INFORMATION TECHNOLOGY SERVICES

1.5 Extensions Manager

UNC INFORMATION TECHNOLOGY SERVICES

Additional Changes

Template Manger

- updated standard, (included) templates
- updated template preview, (shows module positions and names for easy identification)

UNC INFORMATION TECHNOLOGY SERVICES

Additional Changes

General Changes

- Full support for feeds (atom 1.0 and RSS 2.0);
- Improved error handling;
- Improved lost password handling;
- Improved caching of templates, extensions and pages

Accessibility Changes

- All html output has been moved into extension templates.
- A designer can define his own module wrappers in his site template.
- The pagination output can be overridden in the site template by a designer.
- SEF system has been revamped. The core SEF support has been improved and can easily be extended by plug-ins. No core hacking is needed.

Application Framework

- FTP file system; allows users to maintain their site without having an ftp server/client around, ease of use and maximum flexibility
- LDAP support: connect Joomla! to an enterprise directory like Microsoft's Active Directory or Novell's e-directory
- New PDF library

UNC INFORMATION TECHNOLOGY SERVICES

Joomla Resources

- Project Site: <http://www.joomla.org>
- Demo Site: <http://demo.joomla.org> [front end - the users view]
- Demo Site: <http://demo.joomla.org/administrator> [back end - administrative tool (use "admin" as log in name and password)]
- End-User Documentation: <http://help.joomla.org>
- Developer Network: <http://dev.joomla.org>
- Extension Directory: <http://extensions.joomla.org>
- Content above taken directly from: www.opensourcematters.org
- GNU General Public License: <http://www.gnu.org/copyleft/gpl.html>
- Joomla Testing & Development Process: <http://dev.joomla.org/content/view/39/63/>
- Joomla 1.5 Roadmap: <http://dev.joomla.org/content/view/23/61/>